

Original operating manual,
read carefully before use!

Version 1.3 en

Cold fogger
eFOG480



SOLO Kleinmotoren GmbH

Industriestraße 9
71069 Sindelfingen, Germany

Phone: + 49 7031 301-0

Fax: + 49 7031 301-149

E-mail: info@solo-germany.com

Internet: <http://solo.global>

Table of contents

1.	About this operating manual.....	5
2.	Information for safe use	6
2.1.	Intended use	6
2.2.	Foreseeable misuse	6
2.3.	Safety information.....	7
2.3.1.	Basic safety information.....	7
2.3.2.	Personal protective equipment	8
2.3.3.	Safe handling of the battery and the charger.....	8
2.3.4.	Service.....	9
2.3.5.	Safe handling of spray liquids.....	9
2.3.6.	Risks from laser beams	10
2.3.7.	Risks from permanent magnets.....	11
2.4.	Safety signs on the device and in the operating manual	11
2.5.	Safety signs on the charger and in the operating manual	12
3.	Design and function.....	13
3.1.	Structure	13
3.2.	Functional description.....	13
3.3.	Type plate	14
3.4.	Scope of delivery	14
3.5.	Handpiece.....	15
3.6.	Control and display panel	16
3.7.	Battery compartment	18
4.	Operation	19
4.1.	Preparing the device for use.....	19
4.1.1.	Charging the battery	19
4.1.2.	Inserting and removing the battery	20
4.1.3.	Adjusting the carrying straps	20
4.1.4.	Adjusting droplet size.....	20
4.1.5.	Filling the tank.....	21
4.1.6.	Switching on venting mode.....	22
4.2.	Using the device	23

5.	Cleaning	24
5.1.	Cleaning the tank and spray nozzle	24
5.2.	Cleaning the intake filter	25
6.	Fault table	26
7.	Storage and transport	27
8.	Disposal	28
8.1.	Disposing of packaging	28
8.2.	Disposing of the device	28
8.3.	Disposing of the battery	28
8.4.	Disposal of the spray liquid	28
9.	Warranty and Guarantee	29
10.	Technical data	30
10.1.	Cold fogger	30
10.2.	Battery	31
10.3.	Charger	31
10.4.	Application rate	32
11.	Wording of the EU Declaration of Conformity	33
11.1.	Cold fogger	33
11.2.	Charger	34

1. About this operating manual

This operating manual is an integral part of the cold fogger. The operating manual contains important instructions and information required to ensure safe use of the device. You must read the operating manual in full before using the device. If you hand over the device to someone else (for example, sell it), you must also include the operating manual.

You can find SOLO operating manuals online at:
<https://shop.solo.global/downloadcenter/>



The machine may be subject to national regulations for periodic inspection by designated bodies, as provided for in Directive 2009/128/EC.

2. Information for safe use

2.1. Intended use

The cold fogger is suitable for applying all liquid pesticides, disinfectants and pest control agents that are intended and approved for the cold fogging process, provided that there is no risk to the environment, people or animals.

The cold fogger is intended for use in hygiene and disinfection, for plant protection indoors and outdoors as well as in greenhouses, for pest control and for the protection of stored products. Observe the operating conditions listed in the technical data to avoid personal injury and property damage.

Intended use includes observing the operating manual, complying with the instructions and safety regulations for the spray liquids provided by the manufacturers, and wearing suitable protective equipment. Improper use and handling can pose a danger to people, objects and the environment.

Do not use flammable spray liquids with a flash point below 60 °C, media containing particles larger than 30 µm, chlorine solutions with a chlorine content above 5%, acetone, hydrofluoric acid or formic acid. The viscosity of the spray liquids being applied must be between 0.5 and 20 mPa*s. Any other use is considered improper and is therefore prohibited.

2.2. Foreseeable misuse

You must adhere to the intended use. In particular, the spray liquids used pose a safety risk.

2.3. Safety information

2.3.1. Basic safety information

Check the device for damage before each use. Do not use the device if it is damaged.

Replace damaged parts immediately. Use only original SOLO spare parts.

When passing the device on to third parties, ensure that they are familiar with its operation and that they are aware of the safety information and comply with it.

Do not use the device while under the influence of alcohol, drugs or medication.

Individuals under the age of 18 may only operate the device under supervision.

Do not make any technical modifications to the device and do not open the device.

Do not operate the device in potentially explosive atmospheres where there are combustible fluids, gases or dust.

When the device is in operation, all persons and animals must be at an adequate distance from the spray liquid being applied. Never point the spray nozzle at people or animals under any circumstances.

Avoid unintentional start-up and verify that the device is switched off before picking it up or carrying it.

The device can be very heavy when fully filled. Ensure that the carrying straps is adjusted appropriately for your height. Ensure that you have a firm footing and a comfortable posture when using it.

Always store the device out of reach of children.

Handle the device with care to extend its service life.

Only use the device in accordance with the instructions in this operating manual.

Keep the handles and grip surfaces dry and clean.

Always switch off the device before transporting it.

When operating the device, always remain within shouting distance of other people who can provide assistance in case of an emergency.

Take regular breaks.

Do not smoke at the place of work.

Do not use the device in windy conditions. Only use the device up to a maximum wind speed of 3 m/s. There is a risk that strong winds blow the droplets away before they reach the target. This can cause harm to people or the environment.

Do not spray against the direction of the wind. Be careful not to spray yourself.

2.3.2. Personal protective equipment

Always wear personal protective equipment when using the device. At a minimum, the personal protective equipment must consist of protective clothing, sturdy shoes with non-slip soles, protective gloves, a respirator and a face shield. In particular, always use a respirator when working with hazardous spray liquids or in confined spaces.

Do not wear loose clothing or jewellery. Keep hair and clothing away from the blower.

2.3.3. Safe handling of the battery and the charger

Only use SOLO chargers to charge the battery.

Use only the batteries intended for the device. When not using a SOLO battery, there is a risk that the battery may catch fire or explode. This can cause injuries.

Do not open or disassemble the battery or charger.

Never allow the battery contacts to come into contact with a conductive object. When storing the battery, make sure that its contacts do not come into contact with any other objects to avoid a short circuit.

Improper use may cause fluid to leak from the battery. Avoid coming into contact with the fluid. In the event of accidental contact with the fluid, rinse the affected parts of your body with water. Seek medical attention if fluid comes into contact with your eyes. Fluid leaking from the battery can result in skin irritation or burns.

Never immerse the battery or charger in liquid. Keep the battery and charger away from spray water.

Before cleaning the charger, disconnect the plug from the power supply. Only use a dry or slightly damp cloth to clean the battery and charger.

Do not use damaged or modified batteries, as this could pose a risk of injury. Damaged or modified batteries may exhibit unpredictable behaviour resulting in fire or explosion.

Ensure that the charger, the charging cable and the power plug are not damaged.

Keep the battery away from open flames. Do not expose the battery to direct sunlight or other sources of heat.

Follow all battery charging instructions and never charge the battery outside of the temperature range specified in the technical data. Charging improperly or at temperatures outside the specified range may damage the battery and increase the risk of fire.

Close the battery compartment before use. The battery can otherwise be damaged. Before use, make sure that the battery and contacts are free of condensation or liquid. Otherwise, do not use the battery.

Never ship defective or used batteries.

Lithium-ion batteries are subject to dangerous goods regulations. Observe the applicable requirements for shipping the battery or transporting it together with other batteries.

2.3.4. Service

Only have the device repaired by qualified staff. Qualified staff may only use original spare parts for repairs. This will ensure that the safety of the device is maintained.

Never service damaged batteries. Service of batteries may only be performed by the manufacturer or authorized service providers.

Contact a your dealer for spare parts.

2.3.5. Safe handling of spray liquids

Observe the safety information, safety data sheets, dosage information, application information and disposal information in the manufacturer's instructions.

Ensure that no contamination of the environment, the water supply and/or the sewer system with spray liquids and cleaning agents occurs during operation or any work on the device by using suitable procedures and collecting containers.

When changing the spray liquid, clean the tank and all parts that come into contact with the spray liquid. Before filling with new spray liquid, first operate the device with clean, sterile water.

Always collect spray liquid (including residues) in suitable containers and dispose of them at the collection points specified by your local authority.

If you come into contact with spray liquid, immediately rinse the affected parts of your body or eyes with plenty of clean water and consult a doctor immediately.

Immediately change any clothing that has been soaked with spray liquid.

Do not eat or drink while handling spray liquids.

If you feel dizzy or experience excessive fatigue while operating the device, cease work immediately. If this condition persists, consult a doctor without delay.

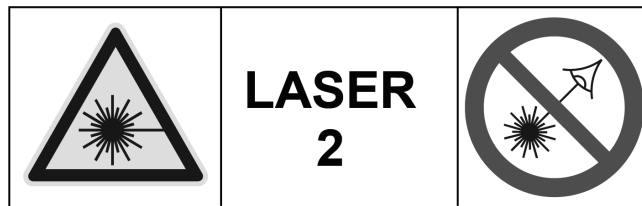
Never allow children or people who are not familiar with handling spray liquids to work with them.

Never fill different types of spray liquid into the tank.

Attach a label to the device with the designation of the spray liquid being used and replace the label each time the spray liquid is changed.

When the work is finished, empty and clean the device as described in this operating manual. Thoroughly clean your face and hands, remove your protective clothing and wash it regularly.

2.3.6. Risks from laser beams



⚠ Caution

LASER RADIATION – Do not stare into beam

Class 2 Laser Product according to IEC 60825-1

(wavelength: 635nm; power < 1mW)

The device is equipped with a laser pointer. Laser beams can cause eye damage. An uncontrolled laser beam may irritate or endanger people outside of the working area.

Never look directly into the laser beam. Never point the scanner laser beam at people or a person's eyes.

Laser beam reflections can also be dangerous. Do not hold mirrors or highly reflective surfaces in the laser beam.

The lasers correspond to class 2 lasers as per IEC 60825-1. Class 2 lasers are not subject to mandatory notification within the European Union (EU). No laser safety officer is required.

2.3.7. Risks from permanent magnets

The cold fogger contains permanent magnets in the handpiece and in the backpack frame. Permanent magnets generate a long-range, strong magnetic field.

Permanent magnets can affect the function of pacemakers and implanted defibrillators. For this reason, do not use the cold fogger if you have a pacemaker or defibrillator and maintain a safe distance. Warn people with pacemakers or defibrillators not to go near the cold fogger.

Permanent magnets can damage devices and storage media, for example, televisions, laptops, hard drives, mechanical watches, hearing aids, loudspeakers, credit cards and EC cards. For this reason, keep the cold fogger away from devices and objects that could be damaged by strong magnetic fields.

Look up the recommended distances to permanent magnets on the internet.

2.4. Safety signs on the device and in the operating manual



Read the operating manual.



Wear protective gloves.



Wear protective clothing.



Wear a face shield.



Wear respiratory protection.



Do not dispose of old devices with household waste.

2.5. Safety signs on the charger and in the operating manual



Carefully read the original operating manual.



For indoor use only.



IP 20 protection rating / Protection class II.



Do not dispose of old devices with household waste.

3. Design and function

3.1. Structure



Fig. 1 Structure of the cold fogger

- 1 Accessory compartment
- 2 Connection hose
- 3 Spray nozzle
- 4 Handpiece
- 5 Backpack frame
- 6 Battery compartment
- 7 Carrying straps
- 8 Carrying handle

3.2. Functional description

The cold fogger is used to apply spray liquids. The spray liquid is applied as a mist using a pump and a blower. To do this, the spray liquid is pumped through an intake filter and through the connection hose into the handpiece. The mist is sprayed through the spray nozzle on the handpiece, assisted by the blower.

3.3. Type plate

The type plate is located in the battery compartment. Do not remove the type plate.

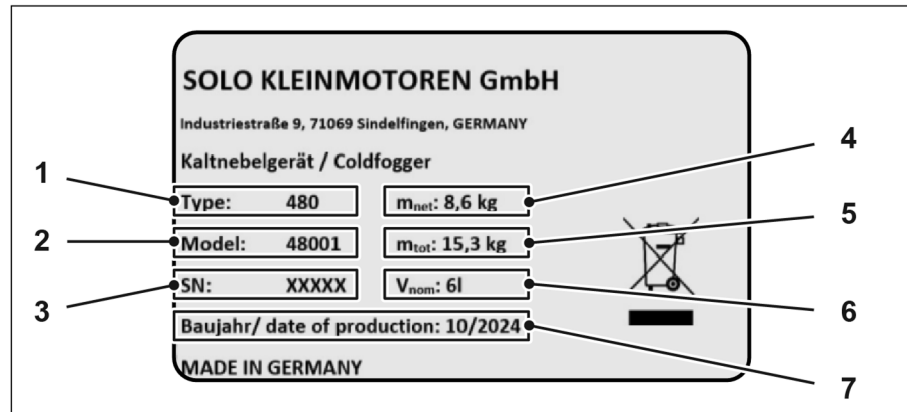


Fig. 2 Overview of the type plate

- 1 Type
- 2 Model
- 3 Serial number
- 4 Empty weight of the cold fogger without battery
- 5 Weight of the filled cold fogger with battery
- 6 Nominal volume of the tank
- 7 Year of construction

3.4. Scope of delivery

The scope of delivery includes the following as standard:

- Cold fogger
- SOLO 18V lithium-ion battery
- SOLO charger with charging cable
- T-25 key

The charger is a quick charger. The charging cable is supplied with a country-specific power plug.

3.5. Handpiece



Fig. 3 Overview of the handpiece

- 1 Control and display panel
- 2 Hand control
- 3 Laser pointer with protective cap
- 4 Spray nozzle
- 5 Bracket

You can hook the handpiece onto the waist belt by hooking one of the two brackets on the handpiece into one of the two loops on the side of the waist belt.

The handpiece is equipped with a laser pointer. The laser pointer is used to indicate the direction.

In addition to the built-in spray nozzle with a nozzle size of 0.1 mm, you can purchase other spray nozzles, for example with a nozzle size of 0.2 mm. Contact a retailer for more information.

3.6. Control and display panel

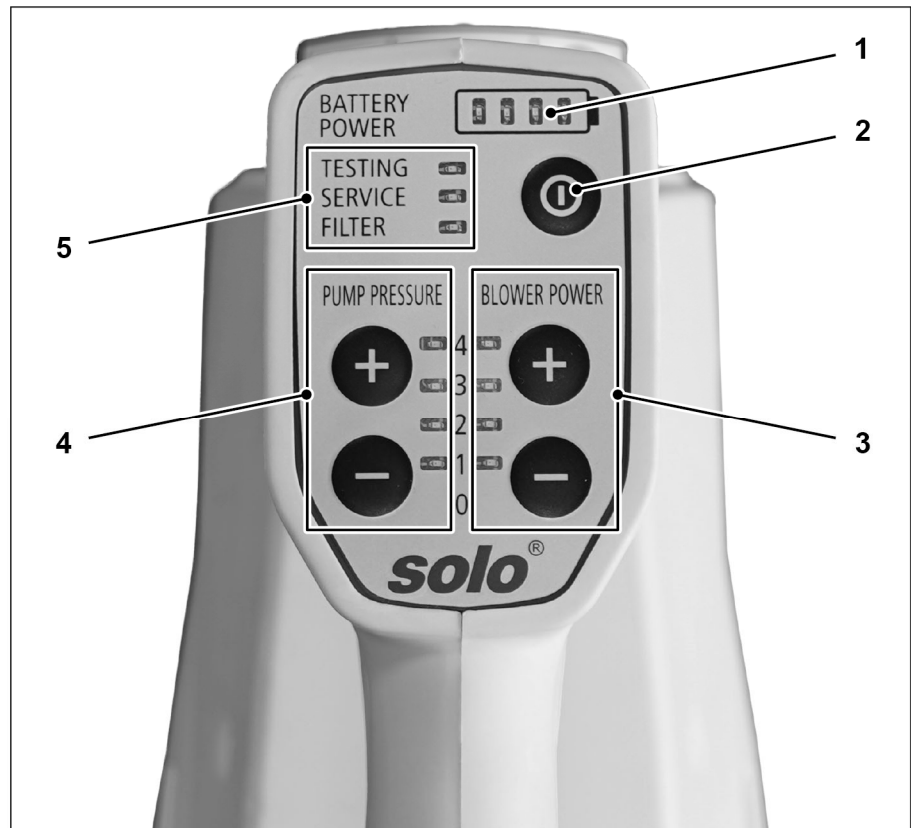


Fig. 4 Overview of the control and display panel

- 1 Charge status indicator
- 2 On/Off button
- 3 Blower power adjustment
- 4 Pump pressure adjustment
- 5 Information LEDs

Function of the various buttons and LEDs

Item	Button/LED	Description
1	Charge status indicator	4 green LEDs – 100% to 80% 3 green LEDs – 80% to 60% 2 green LEDs – 60% to 40% 1 green LED – 40% to 20%
2	On/Off button	Switches the device on and off
3	Blower power adjustment	There are four green LEDs and five levels: you can use the '+' and '-' buttons to adjust the blower power.

4	Pump pressure adjustment	There are four green LEDs and five levels: you can use the '+' and '-' buttons to adjust the pump pressure.
5	Information LEDs	
	- Testing	Lights up orange when the venting mode for the pump is switched on.
	- Service	Flashes when communication between the handpiece and the backpack frame is interrupted. When this happens, malfunctions occur. Lights up continuously when an oil change is required. In that case contact a service partner.
	- Filter	Lights up red when the intake filter is clogged. Clean the intake filter. If ignored, the pump will automatically shut off after 30 seconds to prevent damage to the device.

Adjusting spray output

You can adjust spray output by adjusting pump pressure and/or blower power.

3.7. Battery compartment

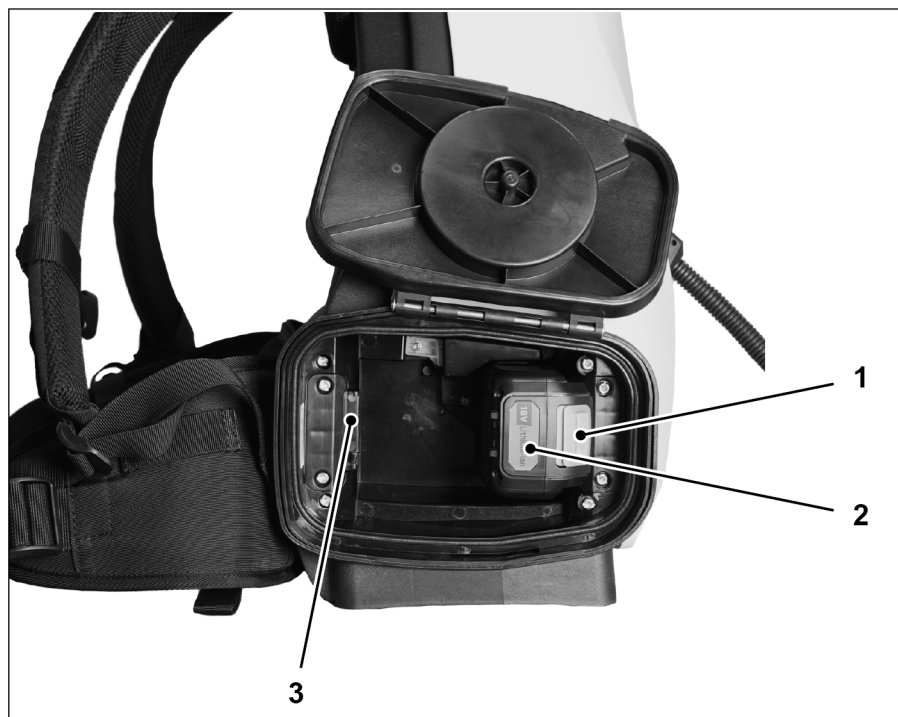


Fig. 5 Overview of the open battery compartment

- 1 Release button on the battery
- 2 Battery
- 3 Slot for spare battery

The battery compartment is protected according to IP64. On the right-hand side of the battery compartment you can insert the battery to operate the device, and you can store a spare battery on the left-hand side.

On the other side of this there is an accessory compartment. You can store personal protective equipment in the accessory compartment.

4. Operation

4.1. Preparing the device for use

4.1.1. Charging the battery

Procedure:

1. If you are using the charger for the first time, connect the supplied charging cable to the charger.
2. Place the charger on a firm surface.
3. Insert the charger's power plug into a wall socket.
4. Insert the battery until it locks in place, paying attention to the clicking sound.
5. After charging is complete, unplug the power plug from the socket.

Information on the battery and charger

The charger is equipped with three blue LEDs that indicate the battery's state of charge during the charging process.

The following states of the LEDs are possible:

- All three LEDs flash one after the other: charge status below 30%
- One LED lights up continuously while the other two flash one after the other: charging status between 30% and 60%
- Two LEDs light up continuously while the third LED flashes: the battery is charged to over 60%
- All three LEDs light up continuously: the battery is fully charged
- All three LEDs flash at the same time: the battery has overheated. Remove the battery from the charger and let it cool for 15 to 30 minutes. Then reinsert the battery into the charger. If the LEDs are still flashing at the same time, have the battery and the charger checked by a specialist workshop
- Two LEDs flash at the same time, while the third LED does not light up: The battery is damaged and cannot be charged

Contact a service partner for more information.

4.1.2. Inserting and removing the battery

The battery is inside the battery compartment. Only open the battery compartment in a dry environment.

To insert or replace the battery, press the release button. Listen for the click when inserting the battery. Always close the battery compartment carefully to prevent moisture from entering. Once the battery has been charged, you can insert it.

4.1.3. Adjusting the carrying straps

Procedure:

1. Put the backpack frame on your back.
2. Fasten the waist belt over the centre of your waist.
3. Tighten the shoulder straps so that the base of the shoulder straps rests in the middle of your shoulder blades.
4. Tighten the positioning straps.
5. Fasten the chest strap.



Fig. 6 Height of the shoulder straps

You can also adjust the height of the shoulder straps in three stages using the T-25 key provided. The middle hole can be used for people between 170 cm and 190 cm in height.

4.1.4. Adjusting droplet size

The choice of spray nozzle, pump pressure and blower power affects the size of the droplets. Refer to the table for the application rate.

If you want to change the spray nozzle, you can simply unscrew it and screw on a different one.

4.1.5. Filling the tank



Fig. 7 Overview of the tank

- 1 Filling sieve
- 2 Tank lid

Fill the tank at a suitable filling location. The filling location must be leak-proof and without runoff. The filling location must also provide sufficient capacity for collecting any spray liquid that is accidentally spilled or overflows.

⚠ Caution

Spilled spray liquid

You or others may experience harmful effects as a result of contact with the spray liquid, and public waters, storm drains and sewers may be contaminated.

- Wear the prescribed personal protective equipment
 - Only fill the spray liquid in places where there is no risk of contamination
 - Do not exceed the maximum filling level
 - Wipe up any spilled spray liquid immediately
-

Procedure:

1. Open the tank.
2. Fill the spray liquid into the tank through the filling sieve. Do not exceed the maximum capacity of 6 litres of spray liquid when filling the tank. Note the level on the outside of the tank.
3. Close the tank again with the tank lid so that the tank is sealed tightly.

Bear in mind that the spray liquid will no longer be properly dispensed if there is less than 200 ml of liquid left in the tank. If necessary, add more spray liquid or empty the tank and then rinse the tank out with clean water for three minutes.

4.1.6. Switching on venting mode

Upon initial commissioning, or if you had removed the suction filter, or as soon as you have completely emptied the tank, vent the pump.

Procedure:

1. Press the '+' button for the pump pressure for three seconds until the 'Testing' LED lights up orange.
2. Loosen the spray nozzle on the handpiece briefly to release any line pressure that may be present.
3. Tighten the nozzle again.
4. Press and hold the hand control on the handpiece until the 'Testing' LED no longer lights up. Venting mode ends automatically after 20 seconds or when spray liquid comes out of the nozzle.

4.2. Using the device

Procedure:

1. Remove the protective cap of the laser pointer when you want to use the laser pointer.
2. Press the On/Off button on the control panel to switch the device on. After switching on the device, all of the LEDs light up for one second. If an LED does not light up, it may be defective.
3. Adjust the pump pressure and blower power by pressing the '+' or '-' button.
4. Press the hand control at the bottom of the handpiece and keep it pressed while spraying the required surfaces. As soon as you release the hand control, the device automatically stops the spraying process.
5. Replace the protective cap over the laser pointer after use.
6. Switch off the device using the On/Off button. The device automatically switches off if it is not used for 10 minutes.

You can adjust the application rate using the pump pressure. You can apply more spray liquid by increasing the pump pressure. You can adjust the droplet size and range using the blower power. Increasing the blower power allows you to apply smaller droplets over a greater distance.

Follow the instructions of the spray liquid manufacturer for the procedure.

Refer to the table for the application rate.

Continuous spray function

As an alternative, you can also use the device with a continuous spray function. Press the hand control twice to switch the continuous spray function on. Press the hand switch again to switch off the continuous spray function.

5. Cleaning

Clean the tank, the spray nozzle and the filler sieve after each use and when changing the spray liquid. Follow the cleaning instructions in the spray liquid instructions. When cleaning, be aware of possible damage to the device.

Never use aggressive, acidic or solvent-based cleaning agents (e.g. petrol). Do not clean the spray nozzle with hard implements.

5.1. Cleaning the tank and spray nozzle

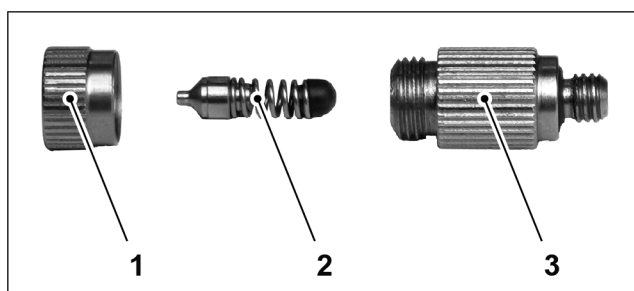


Fig. 8 Disassembled spray nozzle

- 1 Nozzle head
- 2 Non-return valve
- 3 Nozzle body

⚠ Caution

Contact with spray liquid

You can experience adverse health effects from contact with the spray liquid.

- Do not put the spray nozzle in your mouth
- Do not attempt to blow liquid out of the spray nozzle with your mouth

Procedure:

1. Rinse the container thoroughly with clean water. After cleaning, leave the container open to dry.
2. Unscrew the spray nozzle.
3. Clean the spray nozzle and the filler sieve with clean water and a soft brush.
4. Screw the spray nozzle back together.

Dispose of the liquid residues from cleaning in accordance with the manufacturer's instructions.

5.2. Cleaning the intake filter

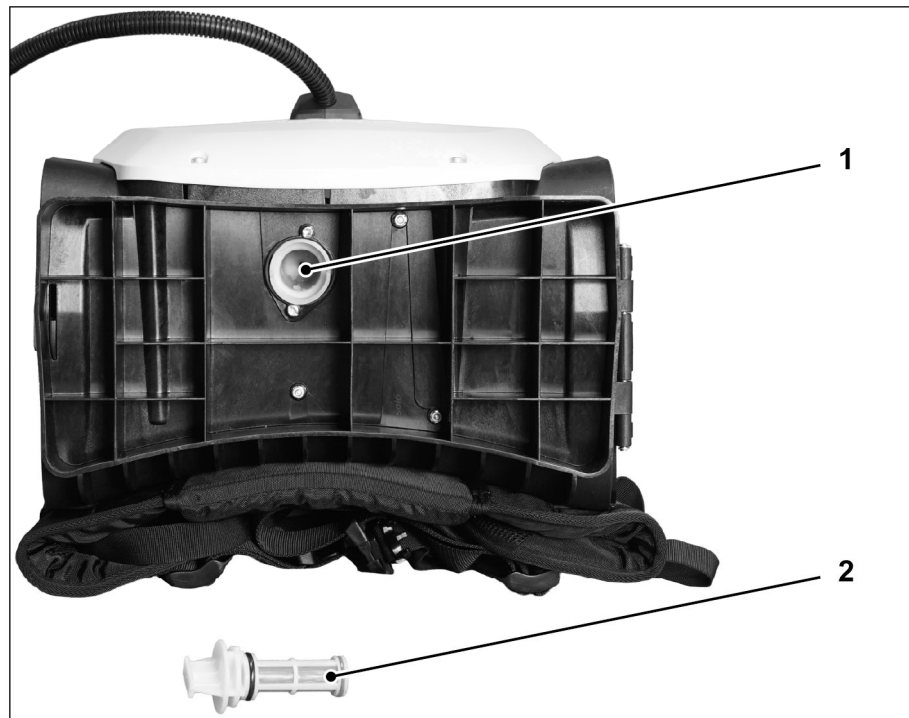


Fig. 9 Cold fogger with intake filter from below

- 1 Bayonet mount
- 2 Intake filter

Procedure:

1. Open the tank.
2. Turn the tank upside down to empty it.
3. Close the tank again with the tank lid so that the tank is sealed tightly.
4. Remove the intake filter by turning it anticlockwise and pulling it out.
5. Rinse the intake filter under running water.
6. Reinsert the intake filter. Make sure that the bayonet lock connectors are firmly connected.

6. Fault table

Fault	
Mist sprays unevenly from the spray nozzle	The O-rings may not be seated properly. Unscrew the spray nozzle and then take it apart. Check that the O-rings on the non-return valve or filter housing are seated correctly. If necessary, put the O-rings back in the correct position. Then screw the spray nozzle back onto the handpiece.
No liquid comes out of the spray nozzle	The spray nozzle might be blocked. Vent the spray nozzle. If no liquid comes out of the spray nozzle, unscrew the spray nozzle and then take it apart. Clean the spray nozzle with water and screw the spray nozzle back together. If there is still no liquid coming out of the spray nozzle, the problem lies elsewhere.
'Service' LED flashes	Flashes when communication between the handpiece and the backpack frame is interrupted. When this happens, malfunctions occur.
'Filter' LED lights up red	The intake pressure of the intake filter is too low. The reason for this is that the intake filter is too dirty. Clean the intake filter. If ignored, the pump will automatically shut off after 30 seconds to prevent damage to the device.

7. Storage and transport

Empty and clean the device according to the instructions in this operating manual. Store the device protected from sunlight in a dry, frost-free and safe place at an ambient temperature of a maximum of 50 °C. Keep the device out of the reach of children.

Store the battery protected from sunlight at a dry, frost-free and safe place at a storage temperature of 10 °C to a maximum of 35 °C.

When transporting, make sure that the device cannot fall over and that no spray liquid escapes. The device may only be transported when it is switched off and the battery is removed. Also, be careful not to damage the connection hose.

8. Disposal

8.1. Disposing of packaging

The packaging is recyclable. Returning the packaging to the material cycle saves raw materials and reduces the amount of waste.

Dispose of packaging materials that are no longer required in accordance with local regulations.

8.2. Disposing of the device



Do not dispose of the device with household waste. Dispose of the device in accordance with applicable local regulations.

Contact your local authority for information on how to properly recycle the individual materials.

8.3. Disposing of the battery

Do not dispose of the battery with household waste. You must collect faulty batteries separately and have them recycled in an environmentally friendly manner.

The following options or disposal are available:

- Return to the retailer
- Drop off at a battery recycling centre
- Discard into a hazardous waste container provided by the local authorities

For more information, contact your local council or municipal authority.

8.4. Disposal of the spray liquid

Observe the disposal instructions for the spray liquid and the container in which the spray liquid is stored. You can find the disposal instructions in the manufacturer's instructions.

9. Warranty and Guarantee

Please note that specific warranty conditions apply in some countries. If in doubt, contact your salesperson.

Any warranty work must be carried out by an authorised retailer.

Cleaning, maintenance and adjustment work are not recognised as warranty services.

Not covered under warranty are the following causes of damage:

- Failure to observe the original operating manual
- Failure to carry out necessary maintenance and cleaning work
- Wear and tear due to abnormal use
- Use of non-approved working tools
- Use of force, improper handling, improper use or accident
- Interventions by unauthorised persons or improper attempts at repair
- Unauthorised modifications to the device
- Use of inappropriate spare parts or non-original parts
- Use of unauthorised spray liquids
- Damage caused by the operating conditions of a rental business is not covered
- Damage to the wear parts of the pump and the blower
- Damage to the battery

10. Technical data

10.1. Cold fogger

Cold fogger	
Empty weight of the backpack frame (with battery)	7.3 kg (16.1 lbs)
Weight of the handpiece	1.3 kg (2.9 lbs)
Nominal volume of the tank	6 l (1.6 USgal.)
System pressure of the pump	Maximum 130 bar (1885 psi)
Flow rate of the pump	Maximum 8 l/h (2.11 USgal./h)
Spray nozzle size	0.1 mm for vectors 0.2 mm for surface disinfection
Operating time per battery	3.5 h for the pump 3 h for the blower 1.6 h for pump and blower together at maximum power
Air volume from the blower	280 m ³ /h at 16 m/s (165 cfm at 52 fps)
Emission sound pressure level	< 70 dB
Total vibration value	< 2.5 m/s ²
Permissible operating temperature	Maximum 50 °C (122 °F)
Permissible ambient temperature	5 °C to 50 °C

10.2. Battery

SOLO 18V lithium-ion battery

Type	Lithium-ion
Nominal voltage	18 V
Nominal capacity	5 Ah
Charging Time	1.5 h
Permissible operating temperature	4 °C to 45 °C (4 °F to 113 °F)
Permissible storage temperature	10 °C to 35 °C (50 °F to 95 °F)

10.3. Charger

SOLO charger with charging cable

Input voltage	100 to 240 V / 50 to 60 Hz
Current	4 A
Permissible operating temperature	4 to 40 °C (4 °F to 104 °F)

10.4. Application rate

SOLO eFOG480 application rate data with water at 20 °C (68°F)												
Nozzle in mm	Pump pres- sure*	Application rate					Droplet spectra in µm					
		in ml/min	in l/h	in oz/min	in USgal./h	DV10	DN10	DV50	DN50	DV90	DN90	Span value**
Nozzle in mm	Pump pres- sure*	Application rate					Droplet spectra in µm with blower*					
		in ml/min	in l/h	in oz/min	in USgal./h	DV10	DN10	DV50	DN50	DV90	DN90	Span value**
0.1	1	19	1.14	0.642	0.301	19.4	4	35.5	12	54.3	32	0.983
	2	27	1.64	0.927	0.434	15.9	4	28.8	11	45.8	28	1.038
	3	34	2.02	1.140	0.534	14.1	4	26.1	11	40	24	0.992
	4	39	2.31	1.302	0.610	12.7	4	23.5	10	36.9	20	1.030
0.1	1	41	2.47	1.393	0.653	25.7	4	41.6	15	66	51	0.969
	2	61	3.65	2.056	0.964	21.1	4	35.4	14	56.4	44	0.997
	3	75	4.47	2.519	1.181	18.5	4	32.2	13	49.8	38	0.972
	4	86	5.18	2.918	1.368	16.8	4	30.2	12	44.9	32	0.930
0.2	1	41	2.47	1.393	0.653	29.4	4	53.7	16	80.1	62	0.944
	2	61	3.65	2.056	0.964	26	4	48.6	15	73.8	54	0.984
	3	75	4.47	2.519	1.181	23.7	4	45.2	13	69.3	47	1.009
	4	86	5.18	2.918	1.368	22.8	4	44.9	12	68.1	40	1.009

*For adjustment, see chapter 3.6 Control and display panel

**Span value = (DV90-DV10) / DV50

11. Wording of the EU Declaration of Conformity

11.1. Cold fogger

EU Declaration of Conformity

SOLO Kleinmotoren GmbH
Industriestraße 9
71069 Sindelfingen,
GERMANY

Person, who is established in the community and is authorised to compile the relevant technical documentation:

Sascha Luft, SOLO Kleinmotoren GmbH

Description and identification of the device

Product designation: Cold fogger
Brand: SOLO
Type: 480
Model: 48001

The manufacturer declares, on its sole responsibility, that the machine is in conformity with all the relevant provisions of Directive 2006/42/EC of the European Parliament and the Council of 17 May 2006 on machinery, valid until January 20, 2027, and the Machinery Regulation (EU) 2023/1230, valid from January 20, 2027. It also complies with the relevant provisions of the following harmonisation legislation:

- Directive 2014/30/EU of the European Parliament and the Council of 26 February 2014 on the harmonisation of the laws of the Member States relating to electromagnetic compatibility
- Directive 2011/65/EU of the European Parliament and the Council of 8 June 2011 on the restriction of the use of certain hazardous substances in electrical and electronic equipment

The following harmonised standards have been applied to the cold fogger:

- EN ISO 12100:2010
- EN IEC 55014-1:2021



Sascha Luft (Managing Director and Documentation Officer)

Sindelfingen, 23/01/2025

11.2. Charger

EU Declaration of Conformity

SOLO Kleinmotoren GmbH
Industriestraße 9
71069 Sindelfingen,
GERMANY

Person, who is established in the community and is authorised to compile the relevant technical documentation:

Sascha Luft, SOLO Kleinmotoren GmbH

Description and identification of the device

Product designation: Charger
Brand: SOLO
Model: 14923

The manufacturer declares, on its sole responsibility, that the object described above is in conformity with the relevant provisions of the following harmonisation legislation:

- Directive 2014/30/EU of the European Parliament and the Council of 26 February 2014 on the harmonisation of the laws of the Member States relating to electromagnetic compatibility
- Directive 2011/65/EU of the European Parliament and the Council of 8 June 2011 on the restriction of the use of certain hazardous substances in electrical and electronic equipment
- Directive 2014/35/EU of the European Parliament and the Council of 26 February 2014 on the harmonisation of the laws of the Member States relating to the making available on the market of electrical equipment designed for use within certain voltage limits

The following harmonised standards have been applied to the charger:

- EN 60335-1-2012/A15:2021
- EN 60335-2-29:2021/A1:2021
- EN 55014-1:2017/A11:2020
- EN 55014-2:1997/A2:2008
- EN 61000-3-2:2014
- EN 61000-3-3:2013



Sascha Luft (Managing Director and Documentation Officer)

Sindelfingen, 23/01/2025

solo[®]

Made in Germany



SOLO Kleinmotoren GmbH

Industriestraße 9

D-71069 Sindelfingen

Postfach / PO Box 60 01 52

D-71050 Sindelfingen

DEUTSCHLAND / GERMANY

Tel.: +49 (0)7031 301-0

info@solo-germany.com

<http://solo.global/>